

**KEY STAGE 3 HISTORY**  
**THE MIDDLE AGES**  
**BRITAIN 1300-1453**

*Interactive*



**WORK BOOKLET**

**How were peoples' lives affected  
by disease, rebellion and war?**

# KEY STAGE 3 HISTORY

## THE MIDDLE AGES

### Britain 1300-1453 Interactive

## WORK BOOKLET



### Section 1. The Black Death

**SLIDE 10** Read the learning outcomes.

**Learning outcomes** are what you will *know and be able to do* after the learning activities in this next section.

I have read the learning outcomes

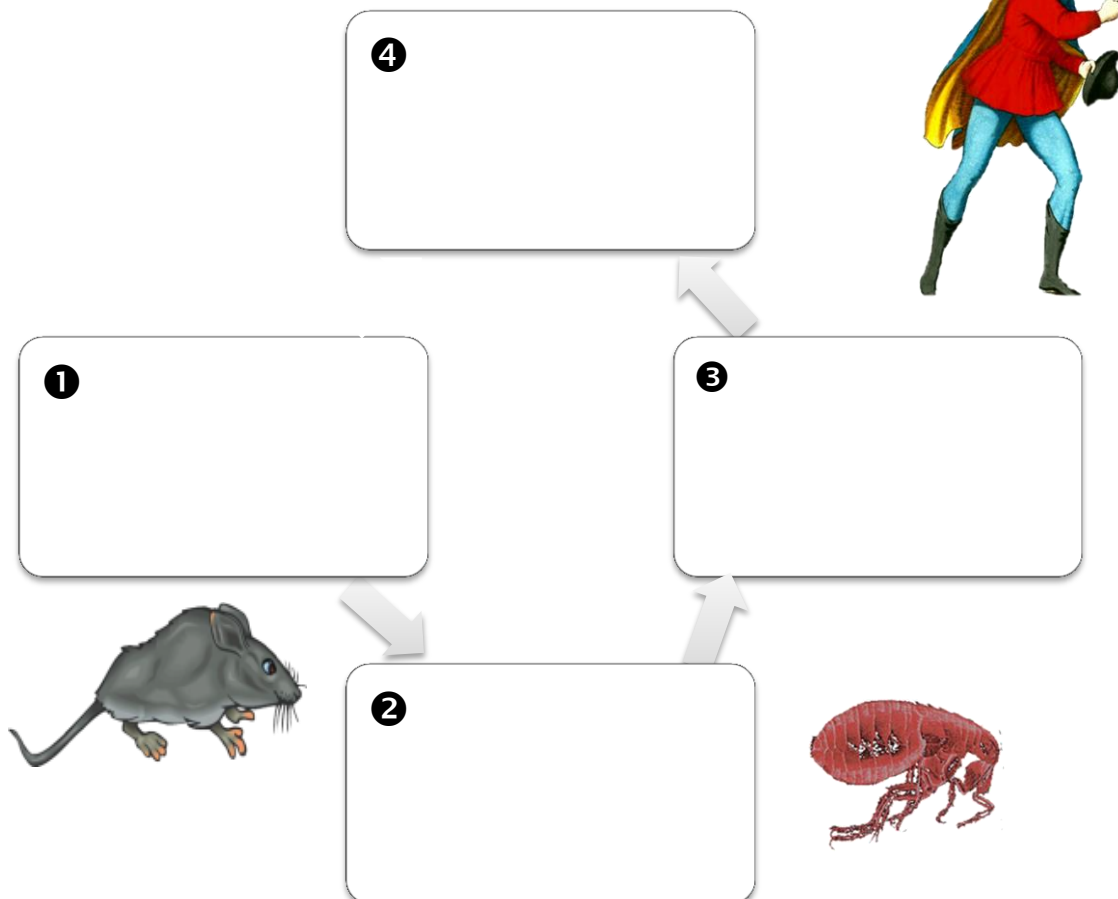
I understand the learning outcomes  I do not understand the learning outcomes

[ASK YOUR TEACHER]

**SLIDE 12**

### WHAT CAUSED THE BLACK DEATH?

37. Complete a diagram to show what caused the Black Death.



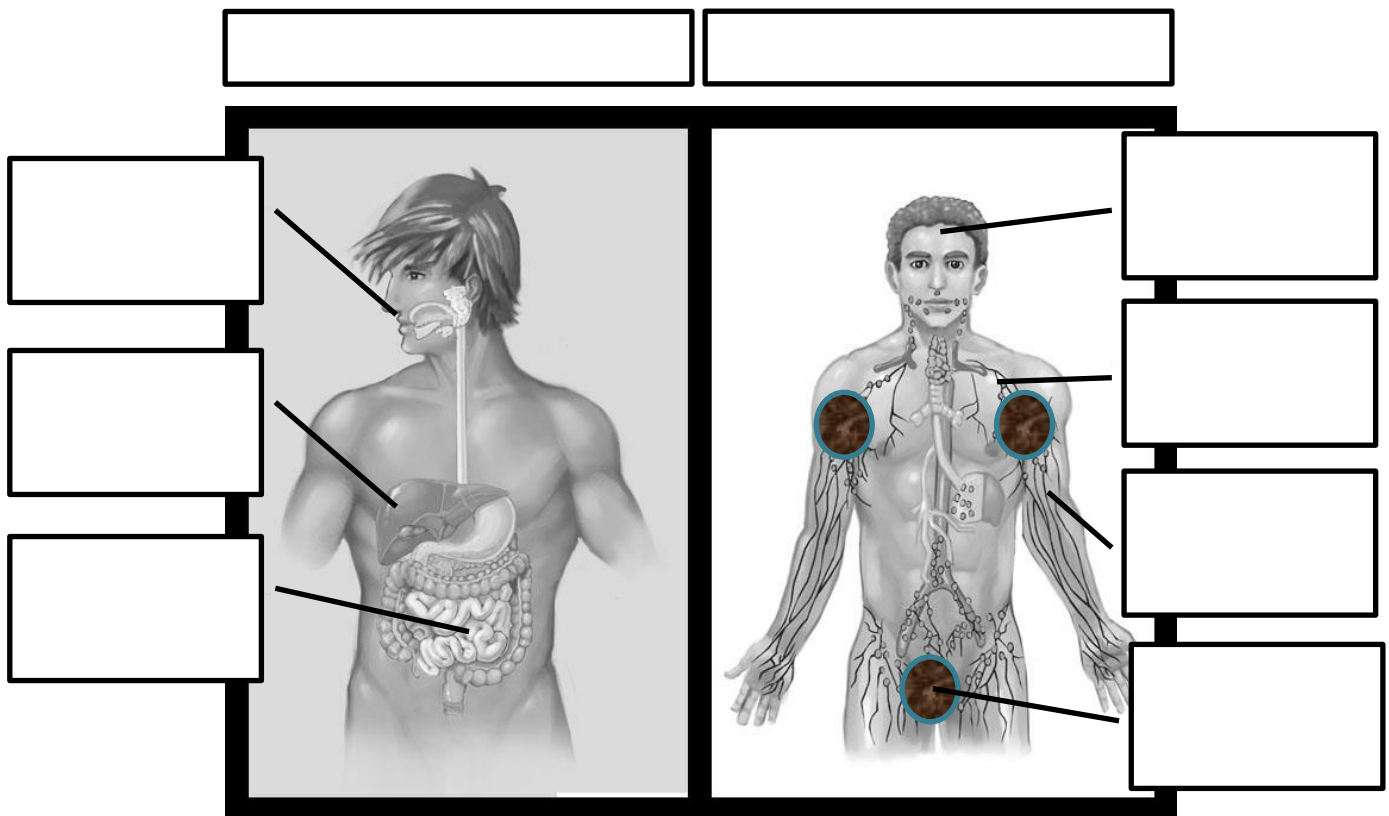
38. What was the bubonic plague?

39. What was the pneumonic plague?

40. Complete a diagram to show the symptoms of both types of plague.

Add the following labels

- Coughing and sneezing
- Infected lungs
- Sickness
- Fever and headache
- Lymph node swellings
- Bleeding from buboes
- Aches in all bones & joints



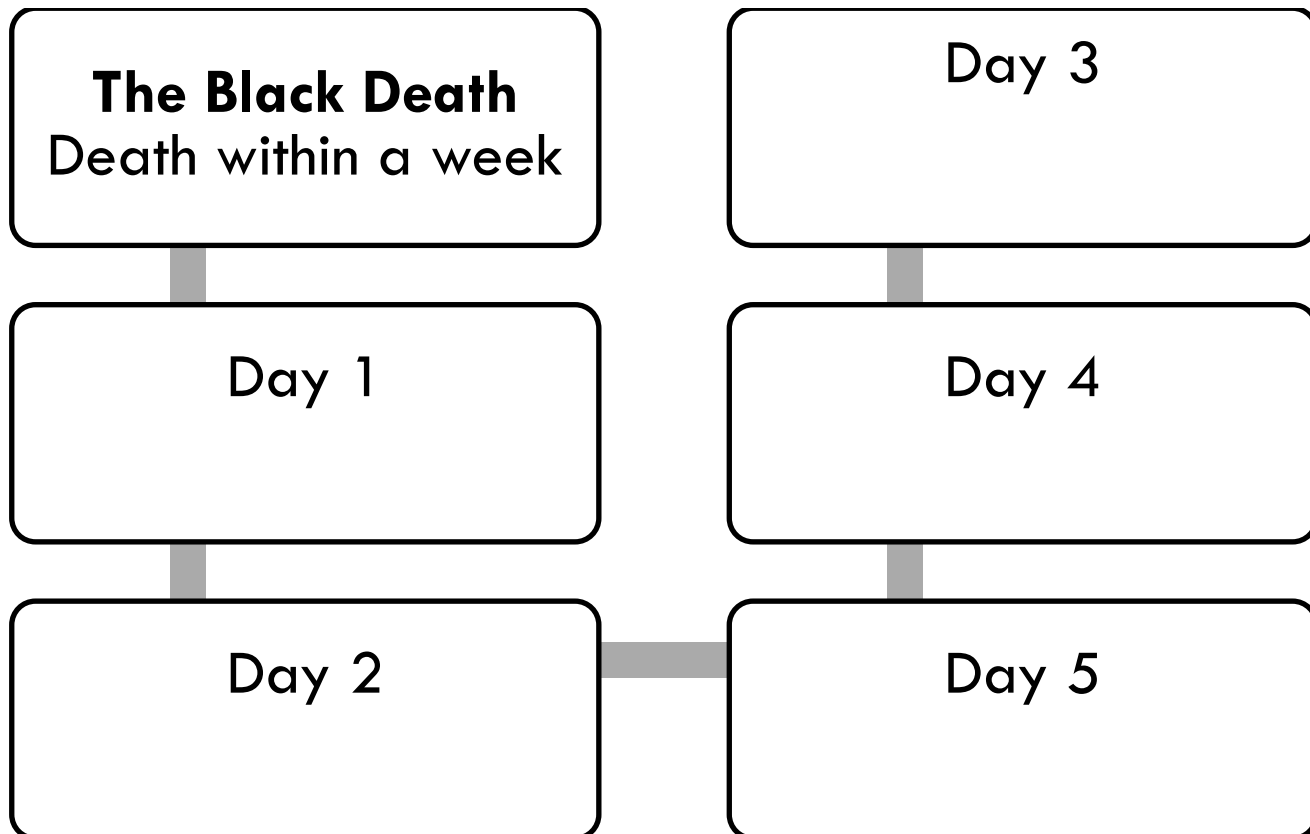
**Extension work**

Click on the [Information button](#) to find out more about the Black Death germ.

**SLIDE 13**

**DEATH WITHIN A WEEK**

41. Look at the picture of the dance of death.
42. What does it show?
  
43. Why were people in the Middle Ages so fascinated by death?
  
44. Complete the diagram of how people died from the plague.

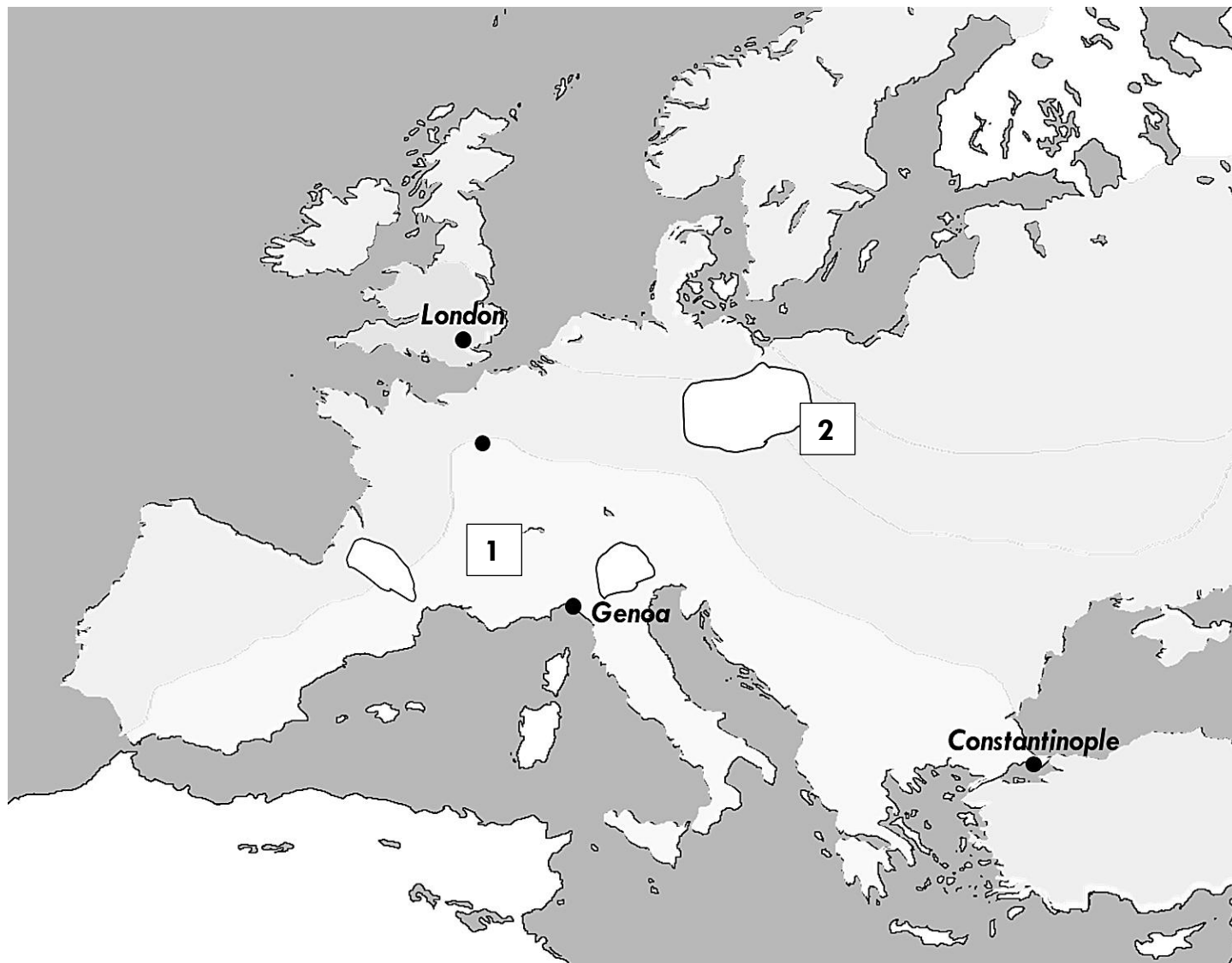


**SLIDE 14**

**WHY DID THE BLACK DEATH SPREAD?**

**CAUSE 1: TRADE**

45. Where do historians think the Black Death originated?
46. How did trade help to spread the Black Death across Europe?
47. Describe how the Black Death arrived in England.



48. Complete the map to show how the Black Death spread across Europe. Add colour to show the progress of the Black Death. Add colours to the key. Shade in areas not affected by the plague. Give the map a title.

### KEY

	1347
	Early-1348
	Mid-1348
	Early-1349
	1350

### Extension work

Click on the Information button to find out about trade on the 'Silk Road'.

Click on the Advanced button and answer the tasks on the arrival of the Black Death.

### **SLIDE 23**

### **THE PLAGUE DEATH TOLL**

81. Look at the picture called the 'Triumph of death'.

82. Who was the artist?

83. Describe the landscape.

84. What are people doing in the picture?

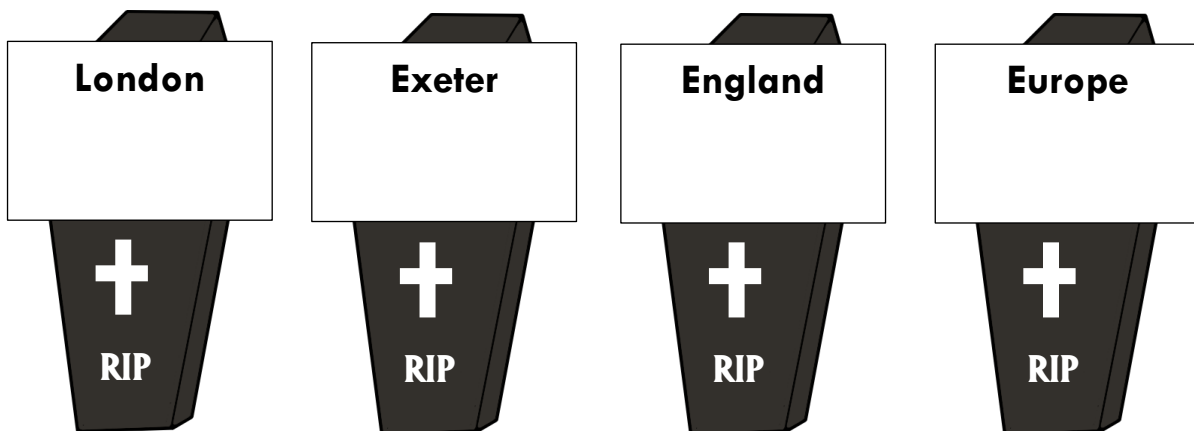
85. What is realistic about this picture?

86. What is unrealistic about this picture?

87. What is the artist trying to tell us in this picture?

### **The plague death toll**

88. Complete the diagram below to show how many people died from the Black Death.



### Extension work

Click on the Information button to find out about London after the Black Death.

Click on the Advanced button and answer the tasks on the effects of the Black Death.

**CHANGES AFTER THE BLACK DEATH**

89. Complete the sentences below.

Because there were fewer workers...

Some peasants had the chance to break away from...

The lords did not complain because...

90. Read Sources 1 and 2. What do they say about how life for the peasants improved?

91. Why would the king not have been happy with how life for the peasants improved?

92. What did the Statute of Labourers say?

93. When was it introduced?

94. Who was the king at the time?

95. What would peasants have thought about this new law?

**Extension work**

Click on the **Information button** to find out why the Church suffered.

Click on the **Advanced button** and answer the tasks on wage increases.

Click on the **Homework button** and choose a task.

**Now do test 1.** Write your score here

%
---